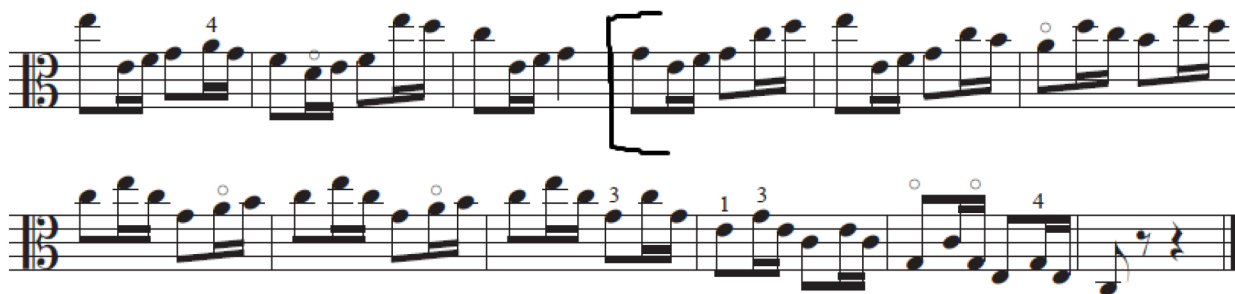


WTAMU Band & Orchestra Camp

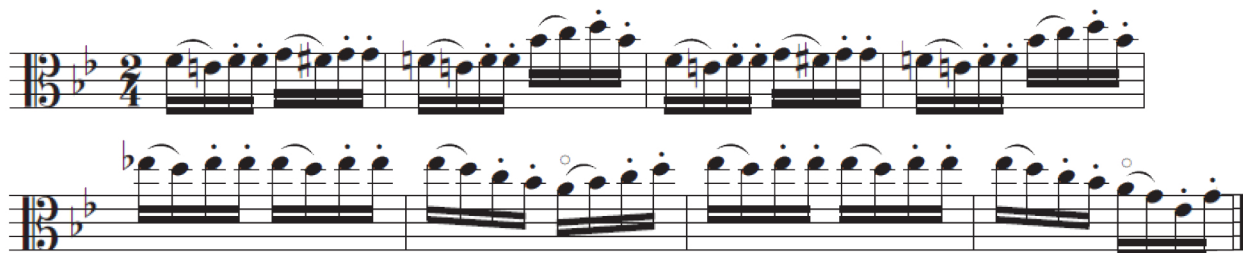
JH and HS Viola Audition Material 2025

play to the end of the variation (double bar line) with which you are most comfortable

1. Allegro



2. Allegro moderato



3.

Andantino.



4.

Moderato.



5. J.S. Bach – Brandenburg Concerto No. 3

Allegro ♩ = app. 72

simile

Viola



WTAMU Band & Orchestra Camp

JH and HS Viola Audition Material 2025

play to the end of the variation (double bar line) with which you are most comfortable

6. H. Berlioz – Roman Carnaval

Andante sostenuto $\text{♩} = 52$



7. W. A. Mozart – Symphony No. 35 "Haffner"

Presto $\text{♩} = 120-138$

